

# COUNTRY HOT TOPICS

GOFC-GOLD Network: SCERIN / MedRIN

Country: Slovenia

Team : Tatjana Veljanovski, Ana Potočnik Buhvald, Krištof Oštir

## Remote Sensing priorities or 'hot topics':

- Permanent **grassland** monitoring – *projects for Nature conservation and Statistical office* [1, 2]:
  - no. of mowings, date of first mowing
  - intensity of use
  - presence of fertilization, renewing, grazing
  - grassland permanency (age) [3]
- **Forest** attributes – *national research projects*:
  - tree species classification [4]
  - forest stand phenology metrics
  - forest water balance cycle
- **EO data processing**:
  - SentinelHub by Planet Labs (Sinergise Ltd.)
  - 1-click ortorectification for VHR datasets
  - Sentinel-1/2, PlanetScope, WorldView, Landsat, MODIS
- **Lidar data visualisations** (RVT toolbox)
  - archaeology
  - Mesoamerican archaeology and archaeoastronomy

Joint Workshop of the GOFC-GOLD SCERIN and MedRIN Networks

CIHEAM conference center, Chania, Greece, July 16 – July 19, 2024

Land Cover Change (LCC) and Extreme Events in the Context of Climate Change

Mediterranean Agronomic Institute of Chania  
Region of Crete

Eratosthenes Center of Excellence, Cyprus University of Technology

Aristotle University of Thessaloniki

NASA LCLUC Program

GOFC-GOLD and START USA

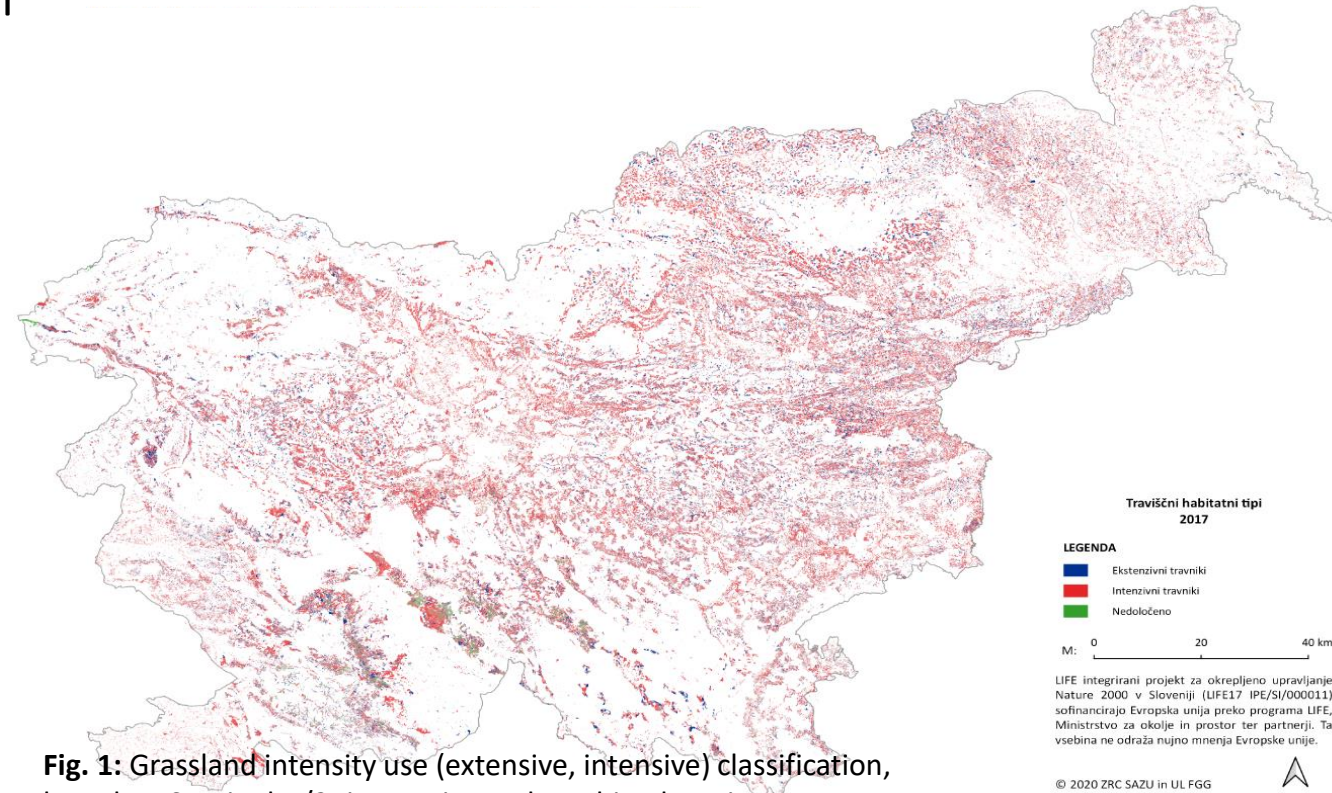


Fig. 1: Grassland intensity use (extensive, intensive) classification, based on Sentinel-1/2 time series and machine learning.

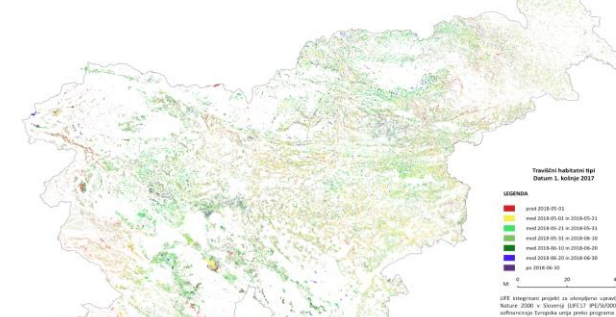


Fig. 2: Date of first mowing changes by regions.

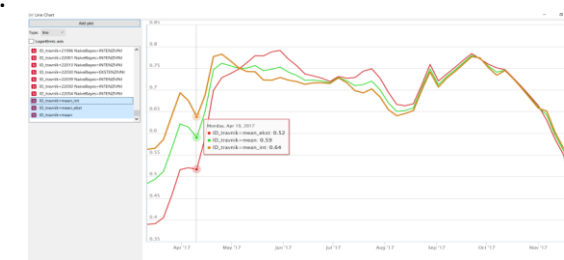


Fig. 3: There is a significant difference in the NDVI time series for intensive and extensive grassland, especially in spring.

# COUNTRY HOT TOPICS

## GOFC-GOLD Network: SCERIN / MedRIN

Country: Slovenia

Team : Tatjana Veljanovski, Ana Potočnik Buhvald, Krištof Oštir

Joint Workshop of the GOFC-GOLD SCERIN and MedRIN Networks

CIHEAM conference center, Chania, Greece, July 16 – July 19, 2024

Land Cover Change (LCC) and Extreme Events in the Context of Climate Change

Mediterranean Agronomic Institute of Chania

Region of Crete

Eratosthenes Center of Excellence, Cyprus University of Technology

Aristotle University of Thessaloniki

NASA LCLUC Program

GOFC-GOLD and START, USA



## ACHIEVED

### 1. Project results:

- **two national research programs:** Anthropological and Spatial Studies + Earth Observation and Geoinformatics

- **Continuation of projects on grassland/forest/wetlands monitoring**, time series and machine learning:

ROVI – Inovative radar and optical satellite image time series fusion and processing for monitoring the natural environment (2021-2024)

→ development of radar-optical vegetation index

SURS GEOS - Development of system for usage of remote sensing data (incl. feasibility study) – case study to monitor agricultural land

(permanent grassland and soil wetness) (2021-2023)

→ age of grassland (Landsat5/8 and Sentinel-2)

→ improved frameworks for mowing detection

ZRSVN - Feasibility study and mapping of grassland habitat types with remote sensing with emphasis on separation of intensive and

extensive grasslands (2019-2020)

→ intensity use of grassland

### 2. Development of new Toolboxes:

AiTLAS - Artificial Intelligence toolbox for Earth Observation [5]

RVT toolbox – Relief Visualisation Toolbox [6]

### 3. Across disciplines – remote sensing and anthropology:

Contextualization of EO data for a deeper understanding of river environment changes in Southeast Europe (2020-2022)

Experiencing water environments and environmental changes: An anthropological study of water in Albania, Serbia and Slovenia (2019-

2022)

### 4. Geographical dimension

Slovenia, Serbia, Bosnia and Hercegovina, Albania, the Carpathians, UK, Ireland, Africa, Jucatan-Mexico

### 5. Networking opportunities:

Joint research project Slovenia-Czech Republic (ARIS-GAČR) & SCERIN colleagues (RO, SK) helped with data sharing

### 6. Currently trending:

STONE: "Unde venis?" Unravelling the enigma of the stećci tombstones (2024-2029), ERC grant

Land of stećci: multiculturalism in the medieval Herzegovina...

## NEAR FUTURE PLANS

1. Delineation of **habitat types** on extensive **grasslands**
2. **Forest response observation** across large geographical gradients (Carpathians, Dinaric mountain range)
3. Deepen monitoring capabilities of **grassland parameters**
4. Research activities on **forest water balance cycle** (integration of field and satellite measurements of soil/canopy water content)

### Main objectives:

- implement VHR time series data (PlanetScope) into the procedures

### NETWORKING OPPORTUNITIES:

- open to **collaboration**, exchange visits and
- to **promote data sharing** within a GOFC-GOLD RIN or between MedRIN and SCERIN



# COUNTRY HOT TOPICS

GOFC-GOLD Network: SCERIN / MedRIN

Country: Slovenia

Team : Tatjana Veljanovski, Ana Potočnik Buhvald, Krištof Oštir

Joint Workshop of the GOFC-GOLD SCERIN and MedRIN Networks

CIHEAM conference center, Chania, Greece, July 16 – July 19, 2024

Land Cover Change (LCC) and Extreme Events in the Context of Climate Change

Mediterranean Agronomic Institute of Chania

Region of Crete

Eratosthenes Center of Excellence, Cyprus University of Technology

Aristotle University of Thessaloniki

NASA LCLUC Program

GOFC-GOLD and START, USA



## References

[1] Grassland Use Intensity Classification Using Intra-Annual Sentinel-1 and -2 Time Series and Environmental Variables.

<https://www.mdpi.com/2072-4292/14/14/3387>

[2] Sustainability of grasslands: Determining the age of grassland with time series from Sentinel-2 and Landsat-5/8 imagery. – *in preparation*

[3] and [4]: see SCERIN-MedRIN agenda day 4

[5] AiTLAS - Artificial Intelligence Toolbox for Earth Observation. <https://aitlas.readthedocs.io/en/latest/#>

[6] Relief Visualization Toolbox (RVT). <https://www.zrc-sazu.si/en/rvt>

## Contacts

<sup>1</sup> Research Centre of the Slovenian Academy of Sciences and Arts, Novi trg 2, 1000 Ljubljana, Slovenia

[tatjana.veljanovski@zrc-sazu.si](mailto:tatjana.veljanovski@zrc-sazu.si)

<https://iaps.zrc-sazu.si/en>



ZRC SAZU

<sup>2</sup> Faculty of Civil and Geodetic Engineering, University of Ljubljana, Jamova cesta 2, 1000 Ljubljana, Slovenia

[ana.potocnik-buhvald@fgg.uni-lj.si](mailto:ana.potocnik-buhvald@fgg.uni-lj.si)

[kristof.ostir@fgg.uni-lj.si](mailto:kristof.ostir@fgg.uni-lj.si)

<https://www.en.fgg.uni-lj.si/departments-and-chairs/chair-of-geoinformatics-and-real-estate-cadastres/>



Univerza v Ljubljani  
Fakulteta za *gradbeništvo in geodezijo*